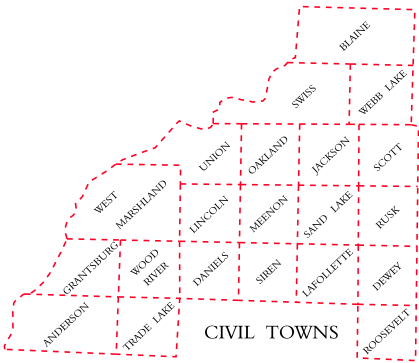
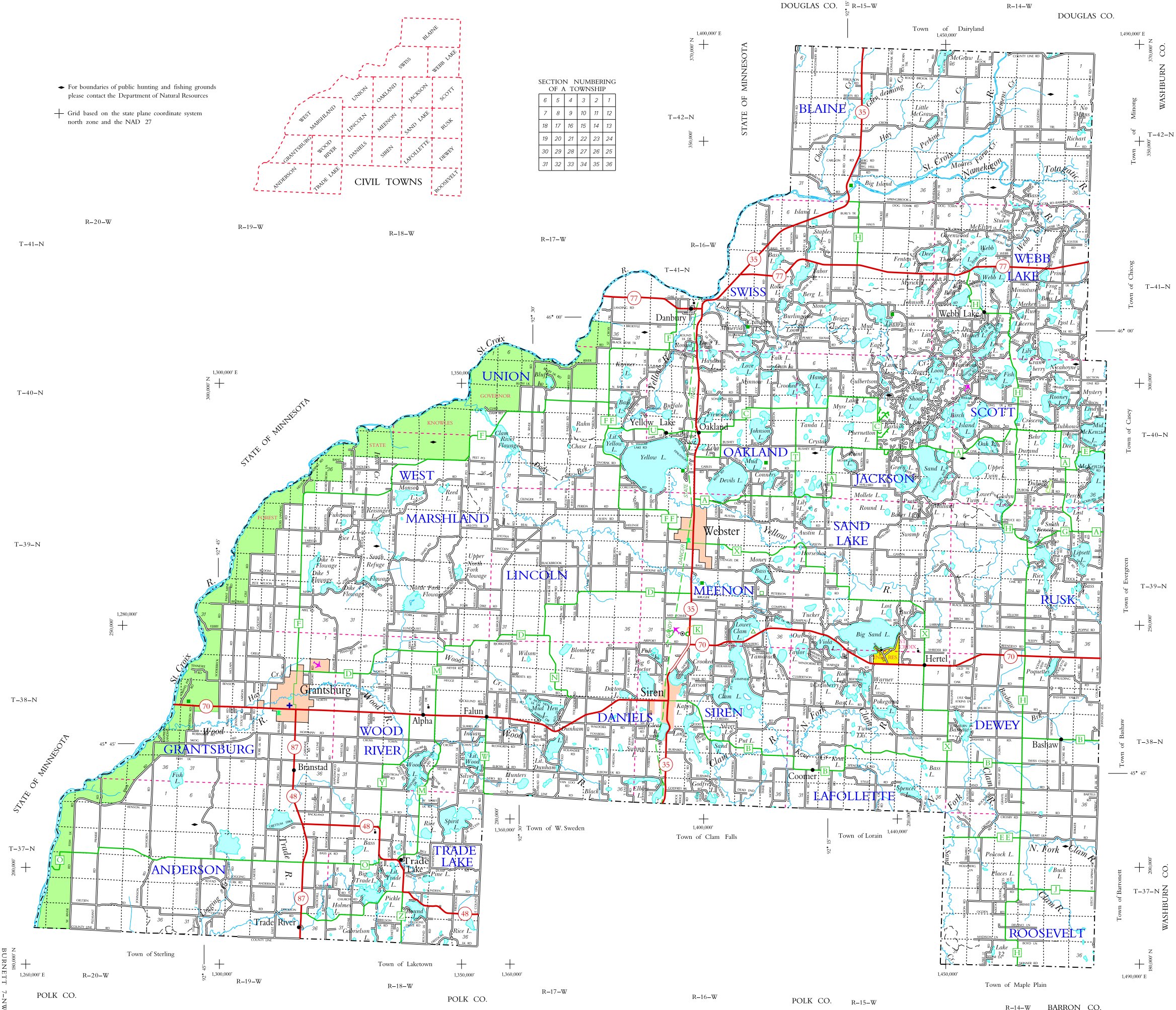


◆ For boundaries of public hunting and fishing grounds
please contact the Department of Natural Resources

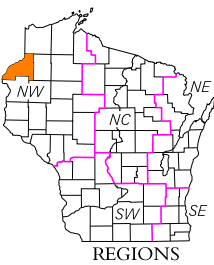
⊕ Grid based on the state plane coordinate system
north zone and the NAD 27



SECTION NUMBERING OF A TOWNSHIP									
6	5	4	3	2	1				
7	8	9	10	11	12				
18	17	16	15	14	13				
19	20	21	22	23	24				
30	29	28	27	26	25				
31	32	33	34	35	36				



- ### LEGEND
- Freeway
 - Multilane Divided
 - U.S. or State Hwy
 - County Trunk Hwy
 - Town Road
 - Firelane
 - Railroad
 - State Trail
 - Interchange
 - Highway Separation
 - Interstate Highway No.
 - U.S. Highway No.
 - State Highway No.
 - County Highway Letter
 - State Boundary
 - County Boundary
 - Civil Town Boundary
 - Section Line
 - Dam
 - Hospital
 - Schools
 - Airport
 - County Seat
 - Unincorporated Village
 - Fish Hatchery
 - Game Farm
 - Public Hunt or Fish Grds.
 - Public Camp & Picnic Grds.
 - Ranger Station
 - State Park
 - County Park ... With Facilities ...
 - Without Facilities ...
 - Rest Area ... Modern Facilities ...
 - Wayside ... Rustic Facilities ...



MILES OF HIGHWAY
as of Dec. 31, 2012

STATE.....	906
COUNTY.....	220
LOCAL ROADS.....	1,205
OTHER ROADS.....	42
TOTAL FOR COUNTY.....	1,573

Land Area (2000 Census) 822 sq mi
Population (2000 Census) 15,674
County Seat Town of Meenon

BURNETT CO.

DEPARTMENT OF TRANSPORTATION
STATE OFFICE BUILDING
Madison, Wisconsin

SCALE 0 1 2 MILES
Corrected for
JAN. 2014

Base compiled from U.S.G.S. Quadrangles
1:100,000 Series