

About the Bicycle Map...

The map in this brochure indicates currently favorable bicycling conditions. The routes were identified by the Wisconsin Department of Transportation (WisDOT), the Bicycle Federation of Wisconsin (BFW), and local residents. The 72 county WisDOT/BFW map series is available as individual PDF files at:

<http://www.dot.wisconsin.gov/travel/bike-foot/countymaps.htm>

Ride Safely

According to WisDOT, bicyclists must obey traffic laws, signs, and signals: ride with (not against) the direction of vehicular traffic; ride as close *as practicable* to the edge of the unobstructed roadway; after dark, lights and reflectors are required; as slow moving vehicles, bicycles may not obstruct traffic unnecessarily, but must yield to faster traffic *if practicable*.

To learn more about Lafayette County, visit our website: www.co.lafayette.gov

Credits: Lafayette County Economic Development Committee | Lafayette County Board of Supervisors | UW-Extension-Lafayette County | Lafayette Development Corporation | Wisconsin Department of Transportation | Andrew Bremer and Joni Graves, Southwestern Wisconsin Regional Planning Commission | Photograph © Ken Zingg. Thank you to the Lafayette County Transportation Safety Committee for their comments. Every effort has been made to ensure the accuracy of the information included in this informational brochure.

— June 2004

Bicycle Lafayette County



Lafayette County...

Lafayette County lies within the unglaciated Southwestern region of the state in the driftless area along the Illinois-Wisconsin border.

This was lead mining country. Rich deposits of lead ore are what put the county on the map in the early 1800s. The mines produced 85% of the nation's output of lead during their peak.

Today, Lafayette County is farming country. Hundreds of 200-400 acre farms dot the landscape, producing traditional crops including oats, corn, soybeans, milk and cheese, beef and pork, and a few raise elk. Many farms have wood-lots that provide habitat for deer, rabbit, squirrel, wild turkey, fox, raccoon, opossum, and many species of birds.

Lafayette County is a beautiful place to bicycle, offering both challenging ascents and some relatively flat routes through breathtaking rural countryside.

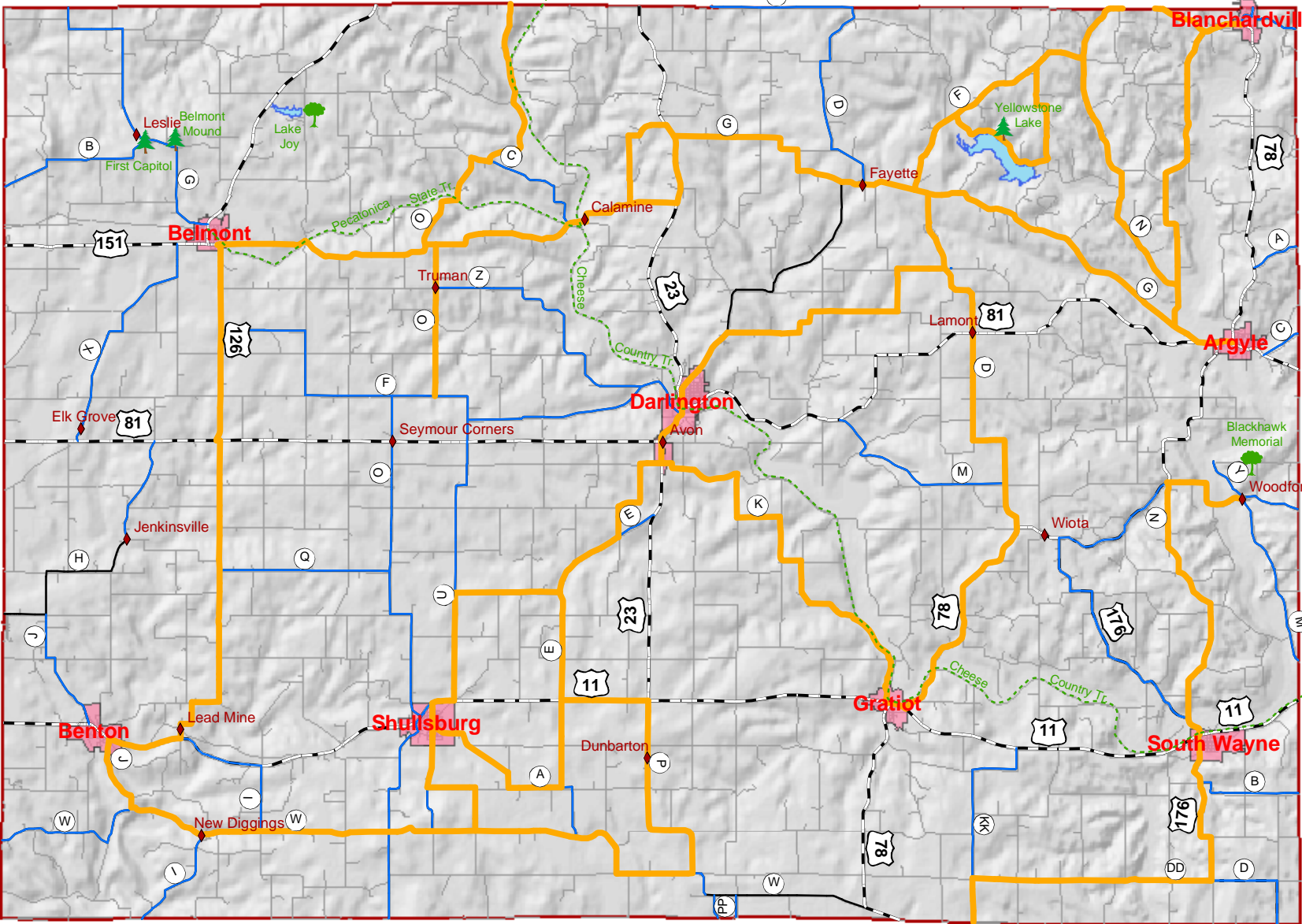
There are many options for creating your own loop route if you utilize street parking in Darlington or one of the villages and head for the roads or trails. Many of the roads on this map are narrow, paved, and low volume. Ride with care.

Enjoy!

Note: The two trails marked on the map are multi-use with ATV and bicycle use permitted. Trail passes are required.



Draft



Lafayette County

Locally Identified Bike Routes

Legend

- State Parks
- County Parks
- Unincorporated Villages
- Identified Bike Routes
- BFA Best Conditions
- Recreation Trails
- U.S. or State Highway
- County Highway
- Town Road
- Major Lakes
- Cities & Villages
- Lafayette County

N

1 inch equals 3.5 miles



This map was created by Southwestern Wisconsin Regional Planning Commission, March 2004

Bicycle Interest Survey

Lafayette County is gathering information about

feedback can help us to provide more resources.

1) Where do you live (check)

☐ Lafayette County

☐ Dane County

☐ Other

2) Do you bicycle in Lafayette County?

☐ Never

☐ Occasionally (see #4)

☐ Regularly (see #4)

3) What could Lafayette County do to increase your bicycling here?

☐ Add bicycle lanes.

☐ Provide more route resources.

☐ Other (please specify):

4) If you bicycle in Lafayette County, is it primarily for:

☐ Recreation; average # miles: ____

☐ Work commute; average # miles: ____

☐ Bicycle training; average # miles: ____

Comments:

Name

Phone

Please return your completed survey to:

Southwestern Wisconsin Regional Planning Commission

719 Pioneer Tower | One University Plaza

Platteville, Wisconsin 53818

Thank You!

A note about the identified routes: The routes shown as suitable on this map are not warranted as being safe—only suggested as more suitable than others.