



2012

WISCONSIN AVIATION ACTIVITY



<http://www.dot.state.wi.us/modes/air.htm>



Wisconsin Aviation Activity 2012

Aviation activity in Wisconsin is determined through the use of information provided by the Federal Aviation Administration (FAA) and developed from Wisconsin Department of Transportation (WisDOT) records and files. Reporting sources include air traffic control facilities, airport managers and scheduled air carriers.

This report shows preliminary activity levels for 2012, as well as the recent past. Historical calendar year totals for aviation activity at airports with control towers were taken from the FAA Air Traffic Activity Data System and the Air Carrier Activity Information System.

The summarized data in this report is used in developing and measuring Wisconsin aviation trends.

Summary of 2012 Aviation Activity

Aviation Activity	2012	Change (11-12)
Total aircraft operations at locations with air traffic control towers	649,980	-5%
Total scheduled air carrier passenger enplanements	5,371,283	-14.6%
Total active registered aircraft	6,064	-72
Total landing facilities on record	734	6
Total enplaned cargo (lbs.)	107,498,209	-7%



Wisconsin Registered Aircraft

Using the FAA definition of “active aircraft” as an aircraft that flew one or more hours during the year, the Wisconsin Registered Aircraft table shows the total active aircraft registered with the WisDOT Division of Motor Vehicles. Totals for 2012 include the number of aircraft registered, those with registration pending and the delinquent registrations as of January 2013.

Wisconsin Registered Aircraft

Active Aircraft	2008	2009	2010	2011	2012	Change (11-12)
Airplanes	5,329	5,249	5,394	5,506	5442	-64
Seaplanes	63	65	72	71	71	0
Sailplanes	69	55	67	71	64	-7
Rotorcraft	118	121	121	123	119	-4
Balloons	80	73	72	71	71	0
Hang Gliders/ Ultralights	80	33	76	76	77	1
Light Sport	139	44	179	200	202	2
Total	5,878	5,640	5,981	6,118	6,064	-72

Data Source: Wisconsin Aircraft Registration Database

There are 734 aircraft landing areas known to exist in Wisconsin. The Landing Facilities table summarizes these landing areas.

Landing Facilities

Landing Facilities	2008	2009	2010	2011	2012
Airports open to the public	130	130	131	133	133
Publicly owned	96	96	96	98	98
Privately owned	34	34	35	35	35
Private use airports	415	414	413	419	423
Heliports (public and private)	146	148	148	148	149
Seaplane bases	27	27	27	28	29
Total	718	719	719	728	734

Wisconsin State Airport System

Of the 734 public and private aircraft landing areas in Wisconsin, 98 make up the Wisconsin State Airport System. These airports are eligible for state funding for airport improvements:

Wisconsin's State Airport System

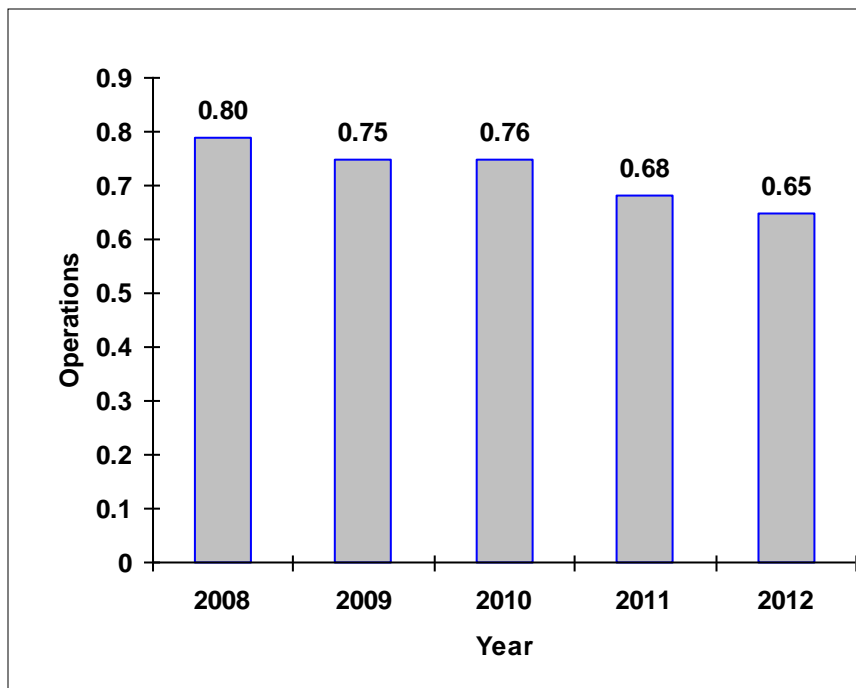
Commercial airports	8
Large general aviation airports	14
Medium general aviation airports	42
Small general aviation airports	34
Total	98

Additionally, 86 of the 98 airports in the Wisconsin State Airport System are eligible for federal funding for airport improvements. These airports make up a system of airports to meet the needs of the state, as well as of the National Plan of Integrated Airport System.

Aircraft Operations

The table below shows the trend in aircraft operations at Wisconsin airports with traffic control towers since 2008.

**Wisconsin Aircraft Operations at
Commercial and General Aviation
Control Tower Locations
(millions)**



Data Sources: FAA Air Traffic Activity Data System (ATADS)
2012: preliminary data

Enplaned Freight (lbs.) at Commercial Airports

Enplaned commercial airport freight for 2012 totaled 107,498,209 pounds. This is a 7 percent decrease from 2011.

Location/ Airport	2008	2009	2010	2011	2012	% Change (11-12)
Green Bay – Austin Straubel International	184,705	130,772	185,186	211,115	133,999	-36.5
Appleton - Outagamie County	10,433,062	8,284,687	10,847,630	10,739,041	10,797,313	.5
Madison - Dane County Regional	10,986,951	8,618,536	12,998,952	13,541,051	14,159,526	4.6
Milwaukee – Gen. Mitchell International	95,203,653	74,590,248	93,805,543	89,657,125	81,013,968	-9.6
Mosinee - Central Wisconsin	1,308,437	1,042,104	600,198	561,085	521,788	-7
Rhineland- Oneida County	1,117,049	1,175,742	1,022,676	896,317	871,615	-3
Total	119,233,857	93,842,089	119,460,185	115,605,734	107,498,209	-7

Data Source– airport data
2012: preliminary airport data

Air Carrier Enplanements

Location/Airport	2008	2009	2010	2011	2012	% Change (11-12)
Milwaukee - General Mitchell International	3,861,333	3,822,542	4,760,170	4,671,976	3,780,315	-19.1
Madison - Dane County Regional	728,075	747,941	766,953	741,365	810,953	9.4
Green Bay - Austin Straubel International	410,348	348,151	349,733	352,157	295,028	-16.2
Appleton - Outagamie County Regional	259,340	271,997	272,471	242,346	228,737	-5.6
Mosinee - Central Wisconsin	154,312	144,961	156,251	135,965	120,637	-11.3
La Crosse - La Crosse Municipal	111,462	104,537	109,962	102,559	101,925	-.6
Rhineland - Rhineland-Oneida County	26,193	26,729	25,137	26,764	11,353	-57.6
Eau Claire - Chippewa Valley Regional	18,762	13,192	18,369	19,097	22,335	17.5
Total	5,569,825	5,480,050	6,459,046	6,292,229	5,371,283	-14.6

Data Sources– 2008-2011 FAA Air Carrier Activity Information System (ACAIS)
2012: preliminary airport data

Aircraft Operations at Commercial and General Aviation Control Towers

Location/Commercial Airports	2008	2009	2010	2011	2012	% Chg (11-12)
Milwaukee - General Mitchell International	183,247	169,693	192,084	173,052	133,498	-23%
Madison - Dane County Regional	110,589	97,702	97,178	84,447	82,761	-2%
Eau Claire—Chippewa Valley Regional	32,810	30,217	28,297	24,874	26,708	7%
Green Bay - Austin Straubel International	88,111	80,324	84,215	68,746	63,832	-7%
Appleton - Outagamie County Regional	41,250	34,464	37,194	33,919	35,119	4%
La Crosse - La Crosse Municipal	25,114	25,984	25,737	22,732	22,831	0%
Mosinee - Central Wisconsin	21,532	18,823	19,154	15,373	15,236	-1%
Subtotal	502,653	457,207	483,859	423,143	379,985	-10%
Location/General Aviation Airports	2008	2009	2010	2011	2012	% Chg (11-12)
Oshkosh - Wittman Regional	81,619	91,307	75,795	71,342	69,174	-3%
Waukesha - Crites Field	62,258	59,322	58,229	56,148	54,801	-2%
Kenosha - Kenosha Regional	55,375	53,961	52,411	47,059	52,738	12%
Janesville – Southern Wisconsin Regional	47,783	49,231	50,183	51,504	55,076	7%
Milwaukee– Lawrence Timmerman	44,881	35,543	32,436	27,763	30,806	11%
*Sparta-Ft. McCoy-Sparta	5,908	6,423	3,819	5,030	7,400	47%
Subtotal	297,824	295,787	272,873	258,846	269,995	4%
Total	800,477	752,994	756,732	681,989	649,980	-5%

*Sparta/Ft. McCoy Airport is a joint use military/general aviation airport

Itinerant/Local Activity Splits

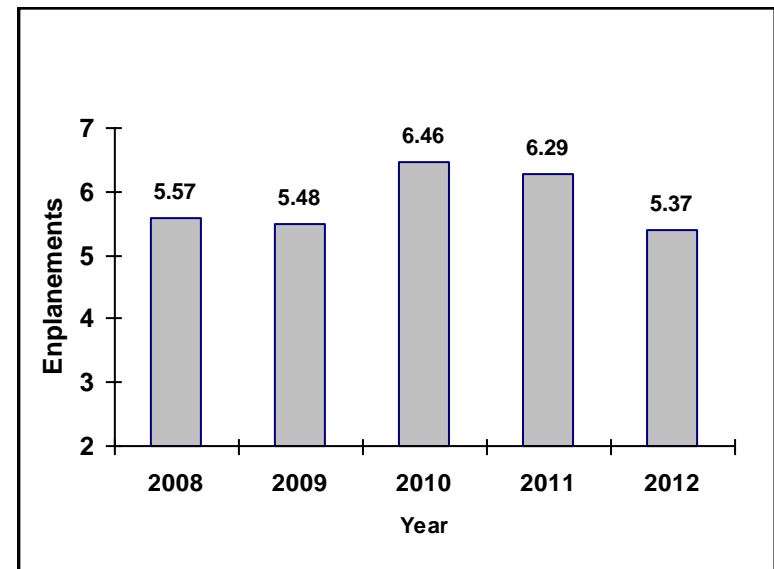
Location/Airport	% Itinerant	% Local
Air Carrier Airports		
Milwaukee - General Mitchell International	99	1
Madison - Dane County Regional	79	21
Green Bay - Austin Straubel International	61	39
Appleton - Outagamie County Regional	79	21
La Crosse - La Crosse Municipal	77	23
Mosinee - Central Wisconsin	88	12
Eau Claire – Chippewa Valley Regional	77	23
General Aviation Airports		
Janesville – Southern Wisconsin Regional	52	48
Waukesha - Crites Field	68	32
Milwaukee - Timmerman	48	52
Oshkosh - Wittman Regional	54	46
Kenosha - Kenosha Regional	52	48
Sparta/Ft. McCoy Airport	50	50

*itinerant: An operation is arriving from outside the traffic pattern or departs the airport traffic pattern.

Air Carrier Enplanements

Air carrier enplanements for 2012 totaled 5,371,283. This is a 14.6 percent decrease from 2011 (6,292,229). These totals include enplaned passengers that originate, stop over, and transfer in scheduled and nonscheduled services. It does not include general aviation.

Wisconsin Air Carrier Enplanements (millions)



Data Sources– 2008-2011 FAA Air Carrier Activity Information System (ACAIS)
2012: preliminary airport data